

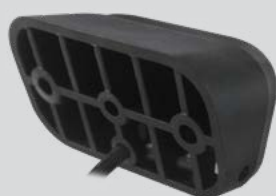


Flat surface mounting grommet supplied as standard with each lamp



7705RP2

Curved rubber mounting pad; designed to fit onto tubing



7705RP3

Angled rubber mounting pad; designed to direct the lamp at a 30° angle toward the ground

7705BM – Black

7709BMB – Blue Light Output 3 x 3W LEDs

7705WM – White

HEAVY-DUTY COMPACT CLEARANCE/SCENE LAMP

3 x 1.5W LEDs

Dimensions (mm):	77 x 44 x 22
Voltage:	12/24V Multivolt
Beam Type:	Flood
Housing:	Powder-Coated Die Cast Aluminium
Lens:	Polycarbonate
Weight (kg):	0.15kg
Ingress Protection:	IP67 + IP69K
Raw Lumens:	570lm
Effective Lumens:	302lm
Current Draw (13.8 / 28V):	0.3A / 0.1A
Colour Temperature:	6000K
Warranty:	3 Years

